

SEE 35, T. 8 N. R. 3 E.

MIN 36-28

NOTE: USING
17° VARIATION

9/25/75

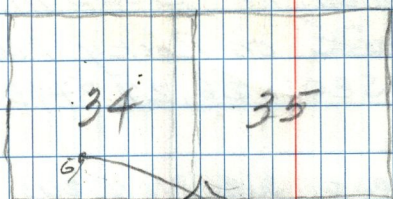
STU

FRED

BILL

& GILBERT MARIOT

BEAUTIFUL DAY



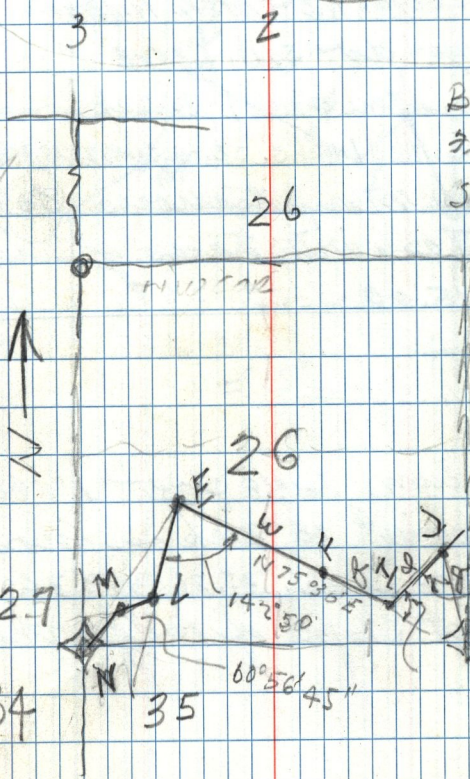
WAT.
LOPE

3° 45'

0° 0'

6° 45'

4° 12'



BILL C.

7-10 W M

~~SCOTT CROKER~~